

LMF Technology & Innovation Summit

2025

Headline Sponsors





LME
LONDON MARKET FORUMS

the office that
we run it

Introduction To The Session

Roger Oldham

Founder & CEO @ LMF



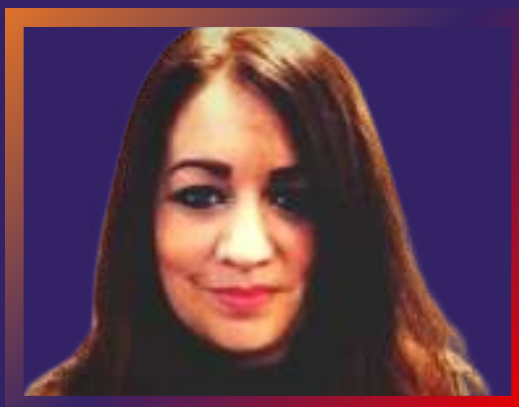
Speakers



Tony Russell
VIPR



Stuart Buckell
Buckhill



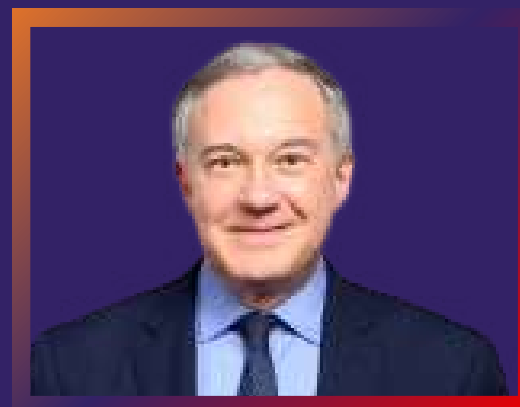
Zoe Steele
Amarillo



Beteja Dovao
EPAM Systems



Antonio Di Marzo
EPAM Systems



Alessandro Stolfi
Generali



Bowie Wong
Snowflake



Chris Woodward
Convex



Brad O'Connor
Sompo



Mike Ashton
Global Aerospace



Roger Oldham
LMF



Vijai Sisubalan
VJSAR

Agenda

1.30 PM – Welcome and Live Polling

1.45 PM – Market Panel: A Market on a Digital Journey

2.05 PM – Workshop 1

2.30 PM – Panel Discussion: Underwriting Discipline vs. AI Ambition

2.55 PM – Workshop 2

3.15 PM – Afternoon Networking Tea Break

3.35 PM – Data Special Session: The Legacy Data Challenge

3.55 PM – Workshop 3

4.20 PM – Technology & Data Leaders Panel Discussion

4.50 PM – Q&A and Close

5.00 PM – LMF Market Christmas Party



Thanks to



WIFI ACCESS: EVENTS@NO6

Join at



A Market on a Digital Journey



Tony Russell
VIPR



Zoe Steele
Amarillo



Roger Oldham
LMF

Roundtable Questions

Are suppliers listening/providing the platforms/tools/services we need to prosper?

What shortcomings are there with current Market systems and are suppliers responding to the calls.

What more could the Market do to assist vendors in helping to design solutions that bridge these gaps.



LME
LONDON MARKET FORUMS

the office that
we in it

Underwriting & AI Discussion



Beteja Dovao
EPAM Systems



Antonio Di Marzo
EPAM Systems



Alessandro Stolfi
Generali



LME
LONDON MARKET FORUMS

the office that
we run it

Mid Afternoon Networking TeaBreak



LMF Technology & Innovation Summit

2025

Headline Sponsors



Roundtable Questions

Within businesses across the London Market, a number of our existing platforms and systems are becoming Ai enabled and enhanced and in addition, we are seeing other Gen Ai tools starting to become available and Large Language Models being developed, which could have a material impact on underwriting/broking over the next five years.

Do you feel that we are in a position to embrace Gen Ai for the good, when it comes to underwriting and other business functions in our sector. What other non-digital complications might result from an uncontrolled adoption of Gen AI?

Who is using Gen Ai already and what are you using it for and what might be the barriers or concerns in using Gen Ai/Agentic Ai when it comes to managing/assessing risk.



LME
LONDON MARKET FORUMS

the office that
we run it

LMF Technology & Innovation Summit

2025

Headline Sponsors



Data Special Session – The legacy data challenge

From Spreadsheets to Data Cloud: Can the London Market Really Modernise?



Bowie Wong
Snowflake



Chris Woodward
Convex

Roundtable Questions

Imagine you have a 12-18 month timeline to reduce the impact of legacy data on one key business area in your organisation:

Pick a focus area: Underwriting, Claims, Reg Reporting/Compliance, Analytics, Finance or other area

Identify 3-5 legacy data pain points in that operational area eg: spreadsheets, manual reconciliations etc..., that may be holding the business back

Suggest 1-2 concrete steps that could be taken fairly quickly to remedy these issues, without needing to start a formal change or transformation programme! Feel free to suggest things that might create an obstacle to success and how you might overcome these challenges.





LME
LONDON MARKET FORUMS

the office that
we're in

LMF Technology & Innovation Summit

2025

Headline Sponsors



Technology, Data & Advisory Leaders Panel Discussion:



Brad O'Connor
Sompo



Mike Ashton
Global Aerospace



Roger Oldham
LMF



Vijai Sisubalan
VJSAR



LME
LONDON MARKET FORUMS

the office that
we run it

Q&A and Close

Roger Oldham

Founder & CEO @ LMF



Polling Results



DOWNLOAD NOW





LMF Market Christmas Party in association with **VIPR Solutions** & **Novidea**





THANKS FOR JOINING US



Join LMF as a Member!



LME
LONDON MARKET FORUMS

the office that
we run it